

Interactive Catalog Supplements Catalog PDFs

If you need detailed product information, or help choosing the right product for your application, see our [Interactive Catalog](#). Use the [Interactive Catalog](#) to access the most complete and up-to-date information available.

The [Interactive Catalog](#) provides an extensive collection of product specifications, application data, and technical literature that can be searched based on criteria you select.

This PDF catalog information was published in November 2000.



Sensing and Control
[Interactive
Catalog...](#)

**Click this icon to try
the Interactive Catalog.**

Sensing and Control

Honeywell Inc.

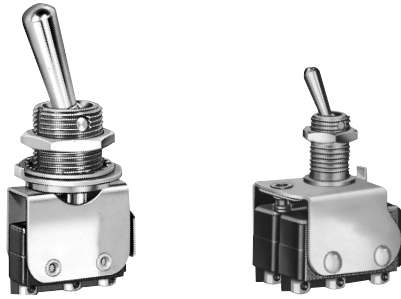
11 West Spring Street

Freeport, IL 61032

Manual Switches

Toggle Switch Assemblies

6AT SERIES



FEATURES

- 2-position, momentary and maintained action.
- 1, 2 or 3 SPDT precision basic switches.
- Short behind-panel depth.
- Choice of 1/4 or 15/32-inch bushings.
- Silver or gold contacts.
- UL recognized, CSA certified basic switches.

ELECTRICAL RATINGS — Basic Switches

| | UL/CSA Rating | Load | 30 VDC Rating | |
|-----------------|---------------------|---------------------------------------|---------------|----------------|
| | | | Amps | |
| | | | Sea Level | 50,000 ft. |
| Silver Contacts | 5 amps, 125-250 VAC | Inductive Resistive Max. Inrush | 3 5 24 | 2.5 5 24 |
| Gold Contacts | 1 amp, 125 VAC | Inductive Resistive Max. Inrush | 0.5 1 2 | 0.5 1 2 |

2-POSITION ORDER GUIDE

| Mounting Style | Toggle Lever Position | | Number of Poles | Types Contacts | Solder Terminals | "T" Terminals | "T2" Terminals |
|--------------------------------|-----------------------|-----------------|-----------------|----------------|------------------|--------------------|----------------------|
| | Keyway | Opposite Keyway | | | | | |
| 1/4" Bushing With Key Tab | Maint. | Maint. | 1 | Silver | 6AT2 | 6AT2-T 6AT68-T* | 6AT2-T2 6AT68-T2* |
| | | | | Gold | 6AT23 | | 6AT23-T2 |
| | | | 2 | Silver | 6AT3 | 6AT3-T | 6AT3-T2 |
| | | | | Gold | — | 6AT13-T | 6AT13-T2 |
| | | | 3 | Silver | 6AT501 | 6AT501-T | |
| | | | | | | | |
| 1/4" Bushing Without Key Tab | Maint. | Maint. | 1 | Silver | 6AT1 | 6AT1-T | 6AT1-T2 |
| | | | | Gold | | | 6AT56-T2 |
| | | | 2 | Silver | 6AT4 | — | 6AT4-T2 |
| 1/4" Bushing With Key Washer | Maint. | Maint. | 1 | Silver | | 6AT201-T | |
| | | | 2 | Gold | | | 6AT231-T2 |
| 15/32" Bushing With Key Washer | Maint. | Maint. | 1 | Silver | 6AT6 | 6AT6-T | 6AT6-T2 |
| | | | | Gold | 6AT17 | | 6AT17-T2 |
| | | | 2 | Silver | 6AT7 | 6AT7-T | |
| | | | | Gold | 6AT42 | | 6AT42-T2 |
| | | | 3 | Silver | 6AT10 | 6AT10-T | 6AT10-T2 |
| | | | | Gold | 6AT18 | | 6AT18-T2 |

* Extra long toggle lever (.67"/17.0 mm).

Toggle/Rockers

Manual Switches

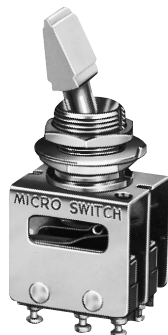
Toggle Switch Assemblies

AT Series

13AT/23AT SERIES



Standard lever



Tab lever



Pull-to-unlock lever

FEATURES

- 2 or 3-position, momentary and maintained action.
- 2, 3 or 4 SPDT precision basic switches.
- Standard toggle, tab, or pull-to-unlock levers.
- Silver or gold contacts.
- 15/32-inch bushing.
- UL recognized, CSA certified basic switches.
- Lever-to-bushing seal option.

ELECTRICAL RATINGS — Basic Switches

| | UL/CSA Rating | Load | 30 VDC Rating | |
|-----------------|---------------------|---------------------------------|---------------|----------------|
| | | | Amps | |
| | | | Sea Level | 50,000 ft. |
| Silver Contacts | 5 amps, 125-250 VAC | Inductive Resistive Max. Inrush | 3 5 24 | 2.5 5 24 |
| Gold Contacts | 1 amp, 125 VAC | Inductive Resistive Max. Inrush | 0.5 1 2 | 0.5 1 2 |

PULL-TO-UNLOCK TOGGLE LEVERS

As a guard against accidental operation, pull-to-unlock toggle levers must be pulled .090 inch/2, 3 mm (approx.) to change positions. A chart showing the 13 locking configurations and their catalog listing suffix code letters is shown on next page.

2-POSITION ORDER GUIDES

| Keyway | Opposite Keyway | No. of Poles | Type Contacts | Standard Lever | | | Tab Lever "T2" Terminals | Pull-To-Unlock Lever Solder Terminals (Add locking letter ① to cat. listings below) | |
|--------|-----------------|--------------|---------------|------------------|---------------|----------------|--------------------------|---|--------------------------------|
| | | | | Solder Terminals | "T" Terminals | "T2" Terminals | | 23AT1- 23AT11- 23AT2- 23AT12- 23AT3- | Locking letters: D, F, or G |
| Maint. | Maint. | 2 | Silver | 23AT1 | 23AT1-T | 23AT1-T2 | 23AT402-T2 | 23AT1- | |
| | | | Gold | 23AT11 | | 23AT11-T2 | | 23AT11- | |
| | | 3 | Silver | 23AT2 | 23AT2-T | 23AT2-T2 | | 23AT2- | |
| | | | Gold | 23AT12 | | 23AT12-T2 | | 23AT12- | |
| | | 4 | Silver | 23AT3 | 23AT3-T | 23AT3-T2 | | 23AT3- | |
| | | | Gold | 23AT8 | | | | | |
| Mom. | Maint. | 2 | Silver | 23AT4 | 23AT4-T | 23AT4-T2 | 23AT403-T2 | | |
| | | | Gold | 23AT19 | | | | | |
| | | 3 | Silver | 23AT5 | | | | | |
| | | | Gold | | | | | | |
| | | 4 | Silver | 23AT6 | | 23AT6-T2 | | | |
| | | | Gold | | | | | | |

① See locking chart on next page.

MIL-S-8805/26 Versions

| Toggle Lever Position | | No. of Poles | Type Contacts | Standard Lever "T2" Terminals | | Tab Lever "T2" Terminals | |
|-----------------------|-----------------|--------------|---------------|-------------------------------|--------------|--------------------------|--------------|
| Keyway | Opposite Keyway | | | Catalog Listing | Military No. | Catalog Listing | Military No. |
| Maint. | Maint. | 2 | Silver | 23AT73-T2 | M8805/26-001 | 23AT473-T2 | M8805/26-003 |
| | | 4 | Silver | 23AT74-T2 | M8805/26-002 | 23AT474-T2 | M8805/26-004 |

Manual Switches

Toggle Switch Assemblies

13AT/23AT SERIES

3-POSITION ORDER GUIDES

| Toggle Lever Position | | | No. of Poles | Type Contacts | Standard Lever | | | Tab Lever | Pull-To-Unlock Lever | | |
|-----------------------|--------|-----------------|--------------|---------------|------------------|---------------|----------------|----------------|----------------------|---|--------|
| Keyway | Center | Opposite Keyway | | | Solder Terminals | "T" Terminals | "T2" Terminals | "T2" Terminals | Solder Terminals | (Add locking letter to cat. listings below) | |
| Maint. | Maint. | Maint. | 2 | Silver | 13AT2 | 13AT2-T | 13AT2-T2 | 13AT402-T2 | 13AT2- | Locking letters: All types | |
| | | | | Gold | 13AT18 | 13AT18-T | | | | | |
| | | | 3 | Silver | 13AT5 | | | | 13AT5- | | |
| | | | | 4 | Silver | 13AT9 | | 13AT9-T2 | 13AT409-T2 | | 13AT9- |
| | | | | | Gold | 13AT29 | | | | | |
| Mom. | Maint. | Mom. | 2 | Silver | 13AT1 | 13AT1-T | 13AT1-T2 | 13AT401-T2 | 13AT1- | Locking Letters: E, L, or N | |
| | | | | Gold | 13AT26 | | | 13AT423-T2 | | | |
| | | | 3 | Silver | 13AT4 | | | 13AT413-T2 | | | |
| | | | | 4 | Silver | 13AT8 | | 13AT8-T2 | | | 13AT8- |
| | | | | | Gold | | | | | | |
| Maint. | Maint. | Mom. | 2 | Silver | 13AT3 | 13AT3-T | 13AT3-T2 | 13AT403-T2 | 13AT3- | Locking letters: E, G, B, L, P or N | |
| | | | | Gold | | | | | | | |
| | | | 4 | Silver | 13AT10 | | | 13AT410-T2 | 13AT10- | | |

MIL-S-8805/26 VERSIONS

| Toggle Lever Position | | | No. of Poles | Type Contacts | Standard Lever "T2" Terminals | | Tab Lever "T2" Terminals | |
|-----------------------|--------|-----------------|--------------|---------------|-------------------------------|--------------|--------------------------|--------------|
| Keyway | Center | Opposite Keyway | | | Catalog Listing | Military No. | Catalog Listing | Military No. |
| Mom. | Maint. | Mom. | 2 | Silver | 13AT271-T2 | M8805/26-005 | 13AT471-T2 | M8805/26-006 |
| | | | 3 | Silver | | | 13AT474-T2 | M8805/26-012 |
| Maint. | Maint. | Maint. | 2 | Silver | 13AT272-T2 | M8805/26-007 | 13AT472-T2 | M8805/26-008 |
| | | | 3 | Silver | 13AT275-T2 | M8805/26-013 | | |
| Maint. | Maint. | Mom. | 2 | Silver | 13AT273-T2 | M8805/26-009 | 13AT473-T2 | M8805/26-010 |

LEVER-TO-BUSHING SEAL OPTION

A splash type lever-to-bushing seal can be provided to help prevent the entrance of moisture and dust behind the panel, or into the contact area. To specify 2-position switches with lever-to-bushing seals, change the 23AT catalog listing prefix to 32AT. Example: **32AT1** is a sealed 23AT1.

Convert 3-position catalog listings by changing the 13AT prefix to 31AT. Example: **31AT2-T** is a sealed 13AT2-T.

HERMETICALLY SEALED BASIC SWITCH OPTION

AT's with 15/32" bushings can be furnished with HM or HS hermetically sealed basic switches, which have metal-to-metal fusion around the cover, actuator base and mounting holes. Terminals are sealed glass-to-metal. The 1/4" bushing 6AT design can also be provided with HM basic switches. For more information, contact the 800 number.



Shown with HM basic switches

LOCKING CONFIGURATIONS

| | | | | | | |
|---|---|--|---|--|---|---|
| A | B Locked In Center and Extreme Position (Keyway Side) | D Locked Out Of Center Position | E Locked In Center Position | F Locked In Extreme Position (Opposite Keyway) | G Locked In Extreme Position (Keyway Side) | H Locked Out Of Center And Extreme Position (Keyway Side) |
| J Locked Out Of Center And Extreme Position (Opposite Keyway) | K Locked In Center And Extreme Position (Opposite Keyway) | L Locked Out Of Extreme Position (Keyway Side) | M Locked Out Of And Into Extreme Position (Opposite Keyway) | N Locked Out Of Extreme Position (Opposite Keyway) | P Locked Out Of And Into Extreme Position (Keyway Side) | |

Toggle/Rockers

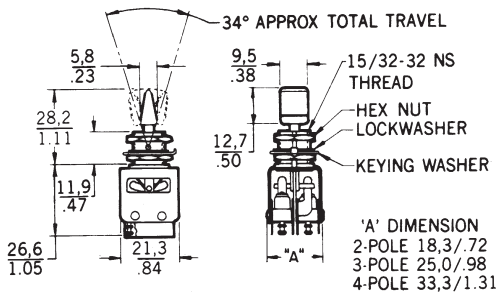
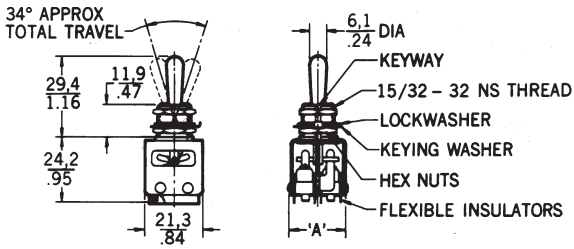
Manual Switches

Toggle Switch Assemblies

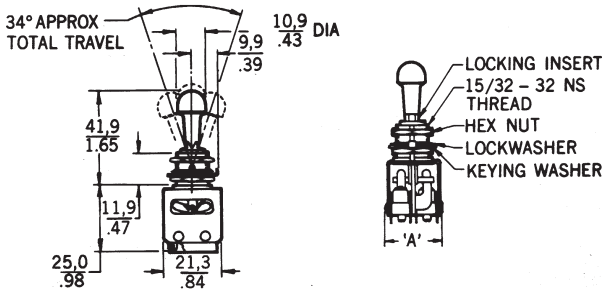
AT Series

MOUNTING DIMENSIONS (For reference only)

13/23AT

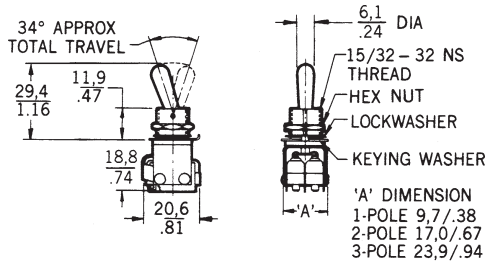


13AT40I-T2

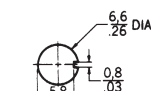


6AT

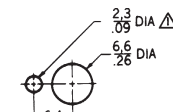
PANEL CUTOUTS



1/4" Bushing

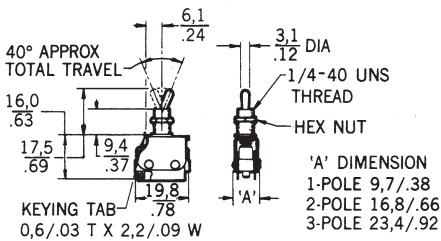


Without Locking Ring

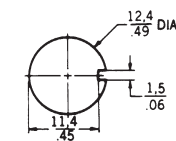


With Locking Ring

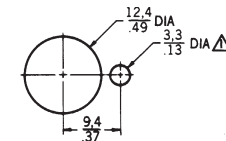
NOTE -
Δ 1.1/.05 MIN DEEP TO ACCOMMODATE LOCKING RING



1 1/2" Bushing



Without Locking Ring



With Locking Ring

NOTE -
Δ 1.4/.06 MIN DEEP TO ACCOMMODATE LOCKING RING

Bushing mounting torque is 10-15 in./lbs.

NOTE—
64AT300, 66AT300, and 68AT300 (M8805/98) listings have a bushing seal and MS25196 panel seal.